



Presents

Sai Empire QUBE



Apartments

VALUE REALITY
CREATING REAL VALUE IN PROPERTY



Discover Your Perfect Dream House

- Great Location
- Good Quality
- Peaceful Living

HOME

@ GUDUVANCHERI

DTCP and RERA Approved Project

Project Funded By :

RERA Approval No :
TN/35/Building/0481/2024



www.valuereality.com



valuereality@gmail.com

Access Sai Empire QUBE



Children Play Area



Generator Power Backup



2 seperate lift

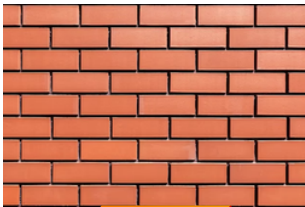
AMENITIES at EASE



Gated Community



Covered Car Parking



RED BRICK Construction



Security



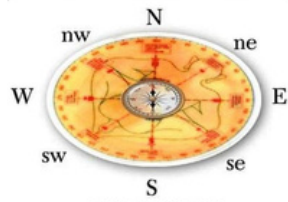
CCTV Surveillance



Paver Block Roads



GYM



Vasthu Compliant



Structural Design



Rain Water Harvesting



Copious water



LED Street Lights



Landscaping



Smart Home



Spacious Bedrooms



lavish Bathrooms

64 Residential Units comprising 1BHK, 2BHK and 3 BHK Apartments ranging From 531 Sq.Ft to 1226 Sq.ft crafted for a premium home design. we have designed your dream home with abundant Lighting, Air Ventilation and perfectly crafted to use every inch of your Floor area.

1ST FLOOR 13 UNITS - A 101 to A 113

3rd FLOOR 13 UNITS - A301 to A 313

2nd FLOOR 13 UNITS - A201 to A 213

4th FLOOR 13 UNITS - A401 to A 413



Road

Access Sai Empire QUBE

64 Residential Units comprising 1BHK, 2BHK and 3 BHK Apartments ranging From 531 Sq.Ft to 1226 Sq.ft crafted for a premium home design. we have designed your dream home with abundant Lighting, Air Ventilation and perfectly crafted to use every inch of your Floor area.

5th FLOOR 12 UNITS - A501 to A 512



Road

Access Sai Empire QUBE



AREA = 954 SQFT - 2 BHK APARTMENTS

FLAT Nos. 101, 201, 301, 401, 501

FACING - NORTH



AREA = 1169 SQFT - 3 BHK APARTMENTS

FLAT Nos. 102, 202, 302, 402

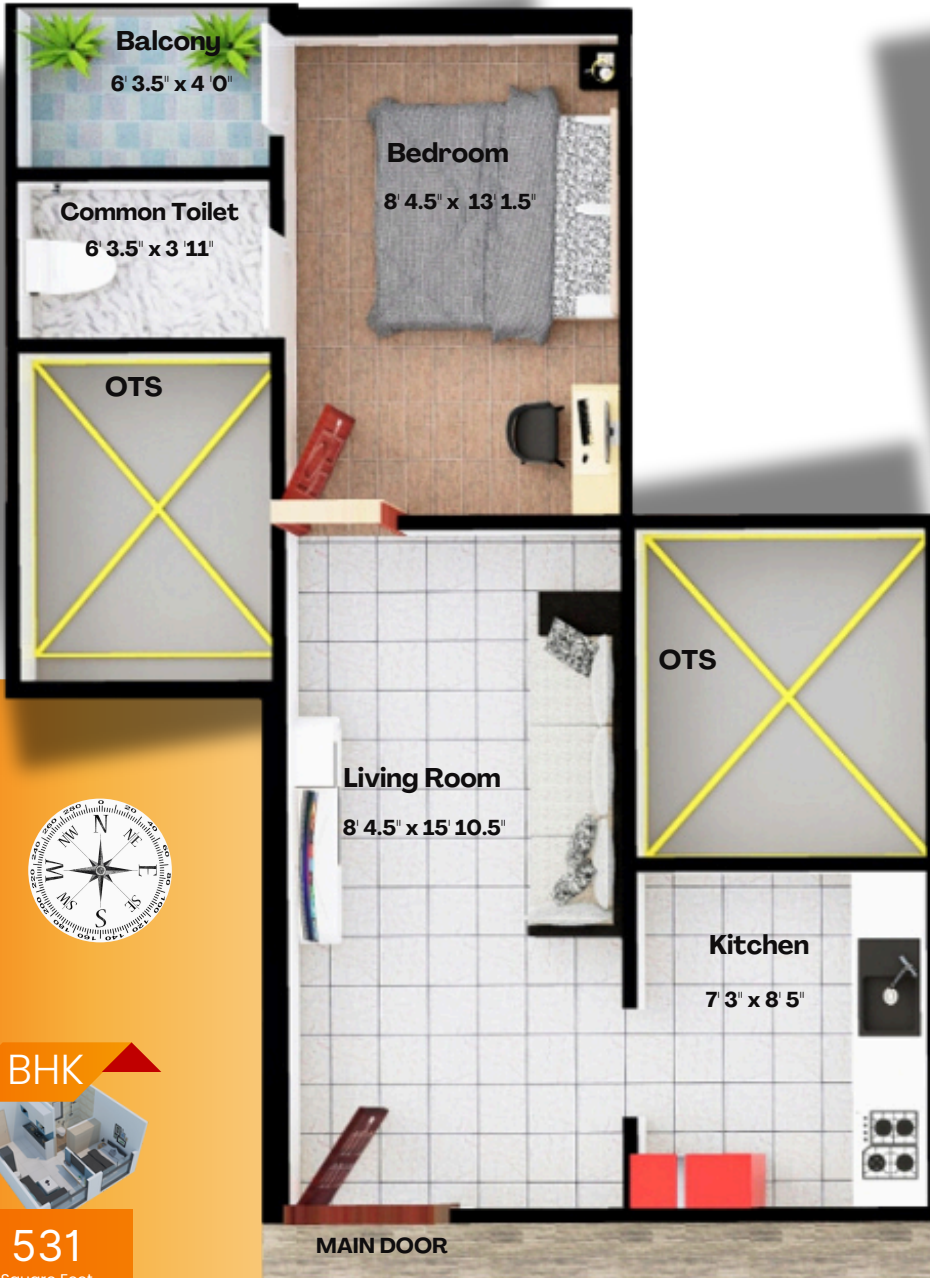
FACING - SOUTH



3-BHK

1169





1 BHK



531

Square Feet

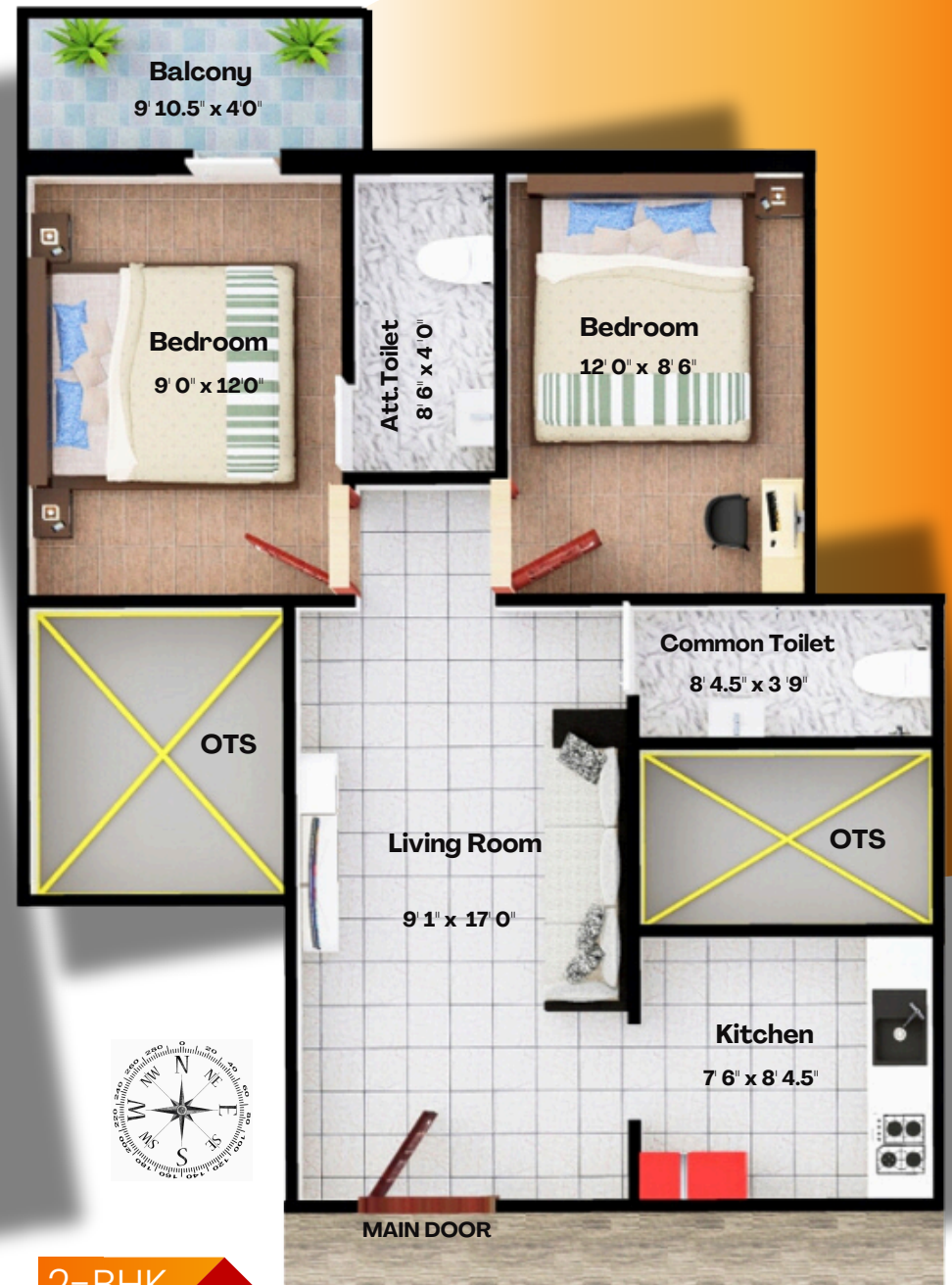


AREA = 531 SQFT - 1 BHK APARTMENTS

FLAT Nos. 103, 203, 303, 403, 502

FACING - SOUTH

WITHOUT CAR PARKING



2-BHK



849

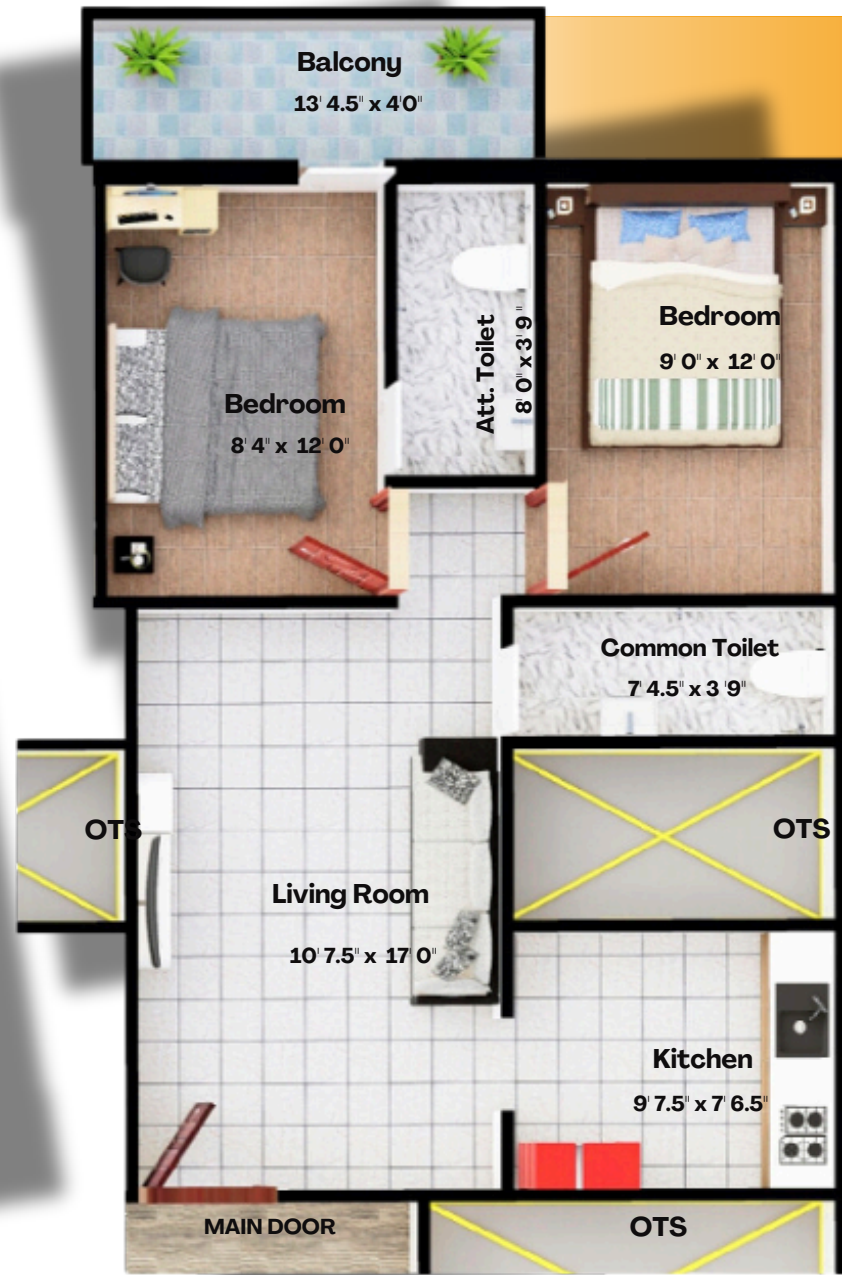
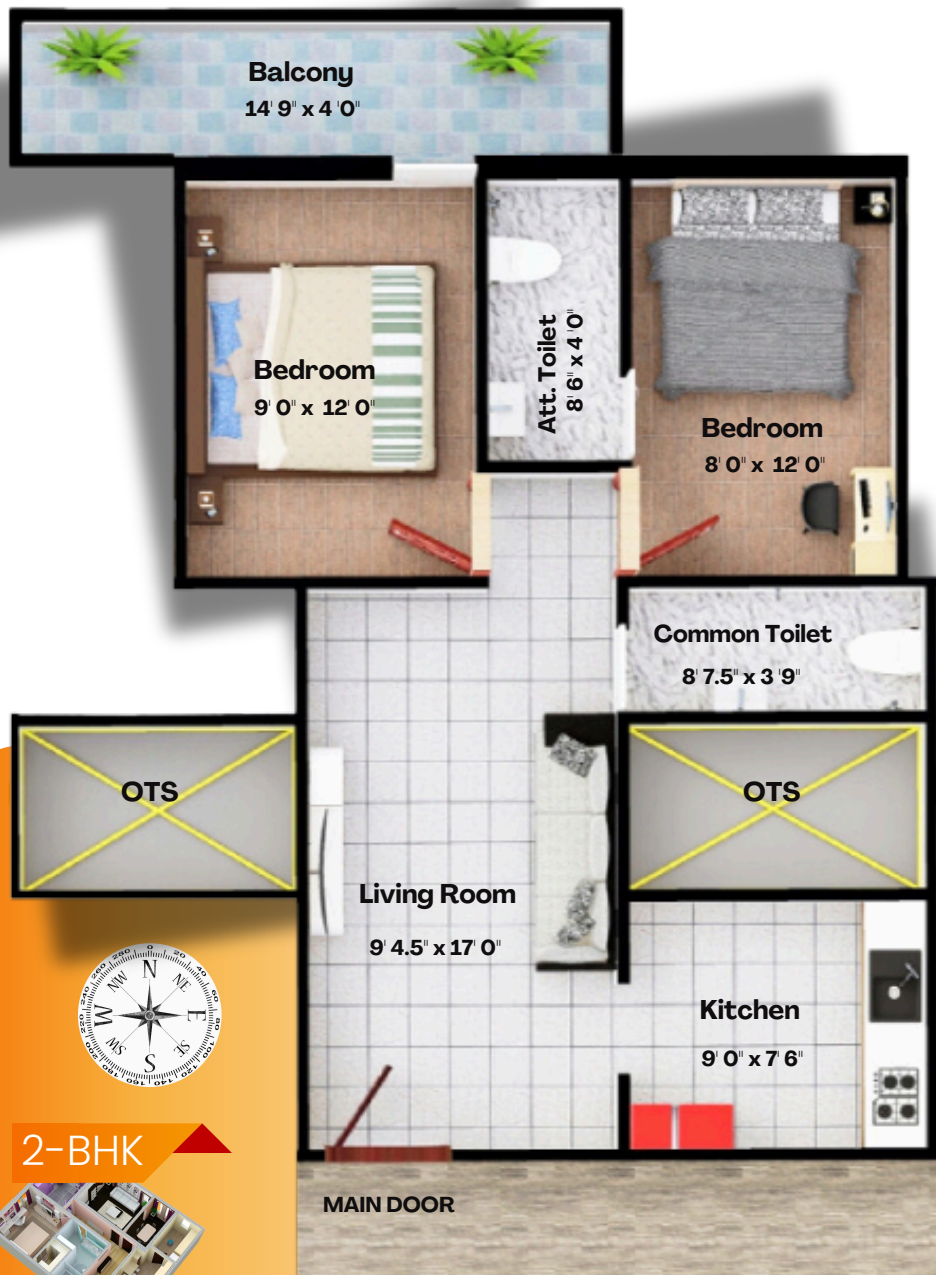
Square Feet

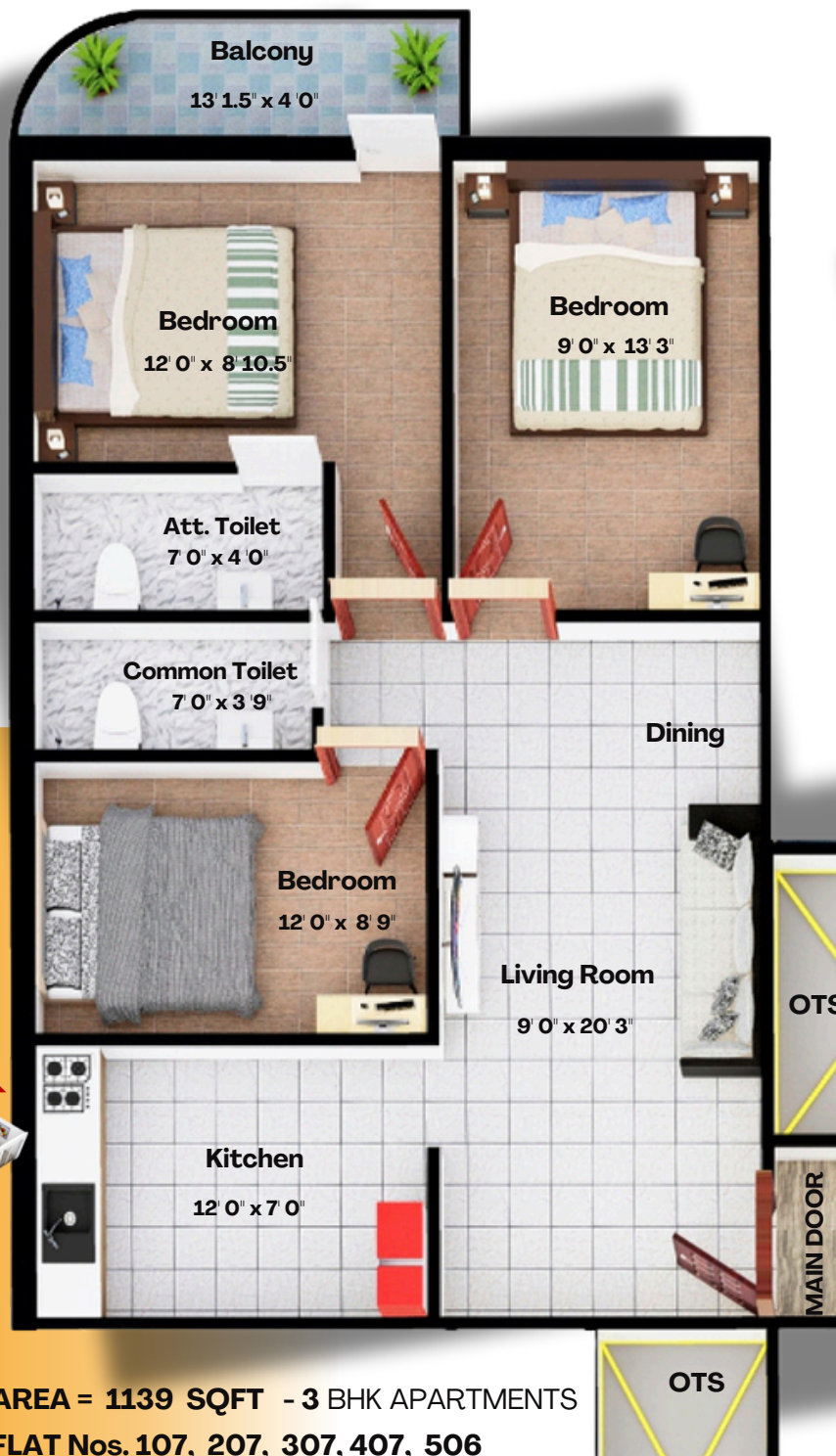
AREA = 849 SQFT - 2 BHK APARTMENTS

FLAT Nos. 104, 204, 304, 404, 503

FACING - SOUTH







3-BHK

1139

Square Feet

AREA = 1139 SQFT - 3 BHK APARTMENTS

FLAT Nos. 107, 207, 307, 407, 506

FACING - SOUTH



2-BHK

AREA = 780 SQFT - 2 BHK APARTMENTS

FLAT Nos. 108, 208, 308, 408, 507

FACING - WEST

WITHOUT COVERED CAR PARKING

780

Square Feet

3-BHK

1226

Square Feet



AREA = 1226 SQFT - 3 BHK APARTMENTS

FLAT Nos. 109, 209, 309, 409, 508

FACING - NORTH



AREA = 647 SQFT - 1 BHK APARTMENTS

FLAT Nos. 110, 210, 310, 410, 509

FACING - NORTH

WITHOUT CAR PARKING

1 BHK

647

Square Feet



2-BHK

AREA = 828 SQFT - 2 BHK APARTMENTS
FLAT Nos. 111, 211, 311, 411, 510
FACING - NORTH

828

Square Feet



2-BHK

AREA = 909 SQFT - 2 BHK APARTMENTS
FLAT Nos. 112, 212, 312, 412, 511
FACING - NORTH

909

Square Feet

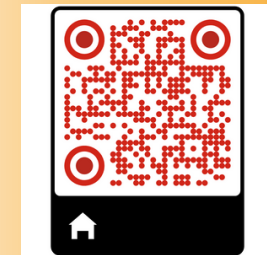


2-BHK

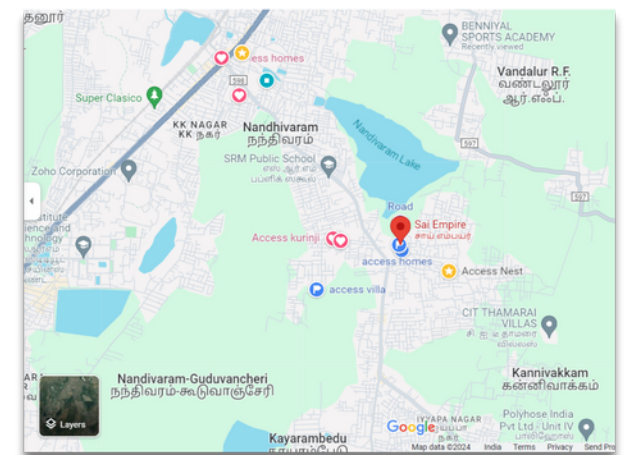
989

Square Feet

Access Sai Empire QUBE



Home Location on Google Maps



AREA = 989 SQFT - 2 BHK APARTMENTS
FLAT Nos. 113, 213, 313, 413, 512
FACING - NORTH



VALUE REALITY

CREATING REAL VALUE IN PROPERTY

Building Specifications :

We use all Branded and Premium Products to build your Dream Home :

- Architect and Structural Engineer Design and Built by Engineers as per vastu.
- UltraTech/Ramco Cement and Isteel/ARS used to build a stronger structure.
- RedBricks of premium quality used for 9" & 4.5" walls.
- Main Doors and Main Door Frames of Teak Wood.
- Windows made of Branded UPVC Sliding Shutters with MS Grill for Safety.
- 2' X 4' Premium Vitrified Floor Tiles and 12x24 " Digital Wall Tiles for bathroom wall upto 7ft and kitchen wall upto 3ft.
- Bathrooms treated with waterproofing and fitted with wall mixer with overhead shower, CP fittings and closets (of parryware ,somany Etc..) Exhaust Fan Provision and heater Piont for individual Bathrooms.
- One Washbasin of reputed make (parryware Etc..) will be provided.
- Bedrooms Provided with 1 Loft 1Cupboard and A/c Provision.
- Kitchen provided with 1 Loft, 1 Cupboard and Kitchen Top has Bull Nose Granite counter with stainless steel sink , 'J' Tap and Digital Wall Tiles. Provision for Chimney, Exhaust Fan and Aqua Purifier installation will be provided.
- All internal Walls treated with Birla/JK wall putty, 1 coat Primer and painted with 2 coats Interior Emulsion.
- External walls treated with cem and painted with 2 coats Exterior Emulsion.
- Best Quality Anchor ISI wiring through PVC conduits concealed walls and stylish switches.
- Plumbing using Ashirvad or Equalant Brand PVC and CPVC (all concealed pipes).





Good Quality

Quality uncompromised policy of our Team, we do put quality first and that makes your dream home a reality with our state of the art technology and workmanship bundled. Quality means doing it right when no one is looking at it to build your dream home come into reality.



Living together in peace is all about accepting differences and having the ability to listen to, recognize, respect and appreciate others, as well as living in a peaceful and united way is our gated Community



Great Location



Located in the close proximity to supermarkets, Velammal, SRM and other CBSE Schools, Hospitals, IT companies, Mahindra world City, Zoho Corp and other MNC companies. Near to Oragadam Automotive Industrial Corridor and Mainly just a few miles away from the newly formed Kilambakkam bus terminus and Guduvancheri Railway Station and GST Road.

Site Address :

Access Sai Empire QUBE

S.Nos.348/6,350/3A,3B1A,B1B&42,
Sai Empire, Karanaipuducheri Village, Guduvancheri

(opposite to Velammal school Off. Nellikuppam Road)

Peaceful Living



Project Marketed by :



VALUE REALITY
CREATING REAL VALUE IN PROPERTY

Corporate Office :

No 144, Baratha Matha Street,
East Tambaram, Chennai - 600059



E mail : valuereality@gmail.com



Website : www.valuereality.com

Project by :



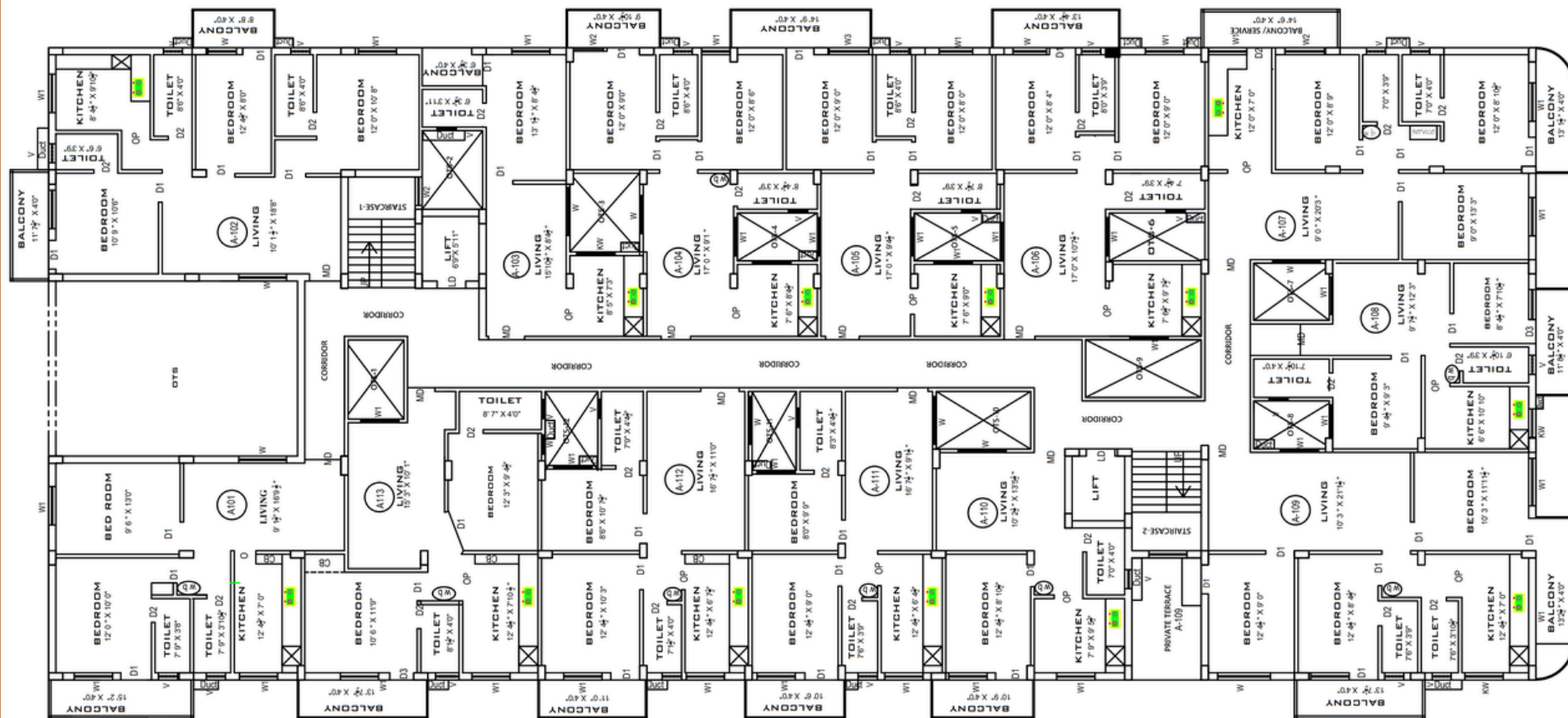
**ACCESS SAI EMPIRE
HOMES PVT LTD**

Building Ur Dream

Housing | Infrastructure | Developers

Access Sai Empire QUBE

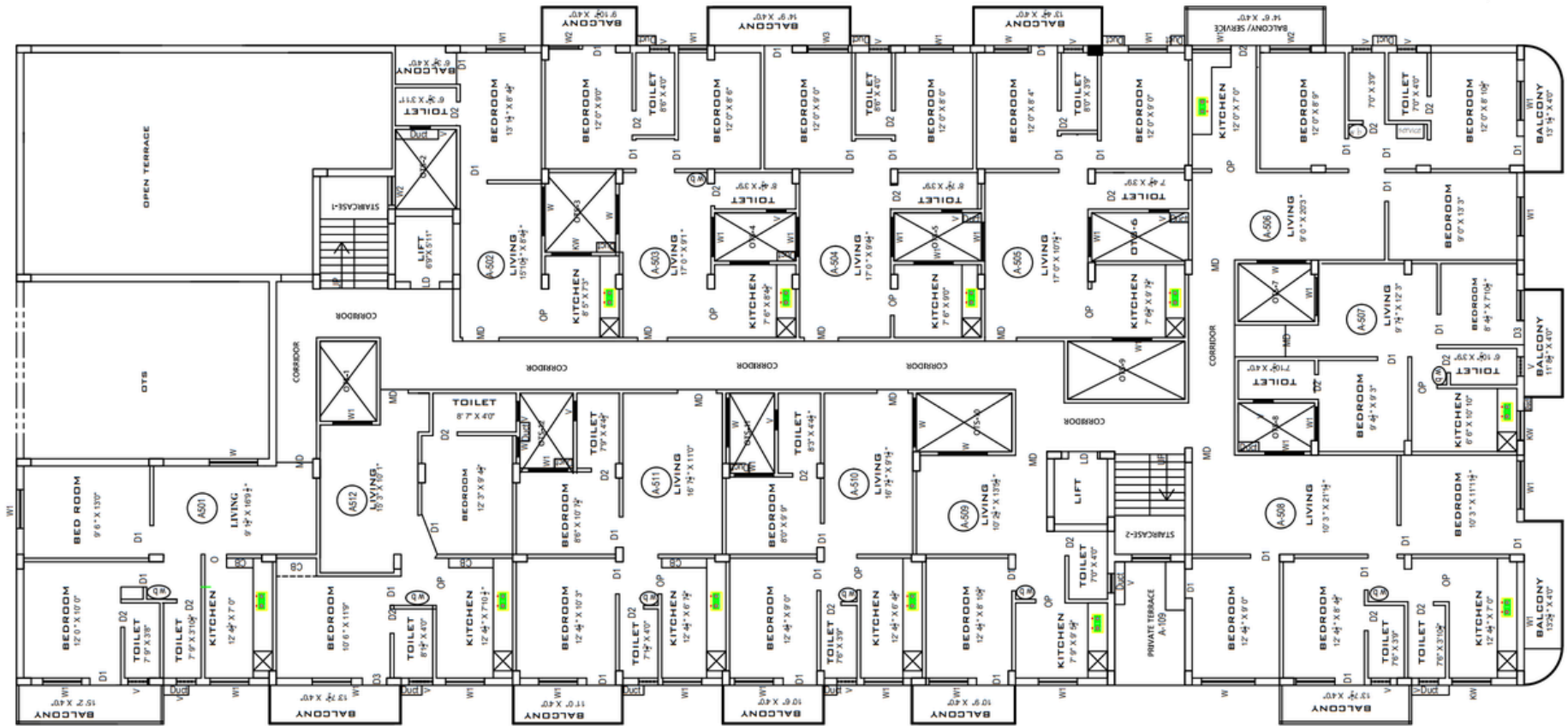
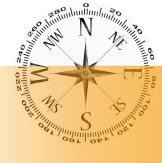
TYPICAL FLOOR PLAN FOR 1ST TO 4TH FLOOR



ROAD

Access Sai Empire QUBE

FLOOR PLAN FOR 5 TH FLOOR



ACCESS SAI EMPIRE HOMES PVT LTD

“Building Ur Dream”

- Great Location
- Good Quality
- Peaceful Living

HOME

@ GUDUVANCHERI

DTCP and RERA Approved Project

Sai Empire QUBE

